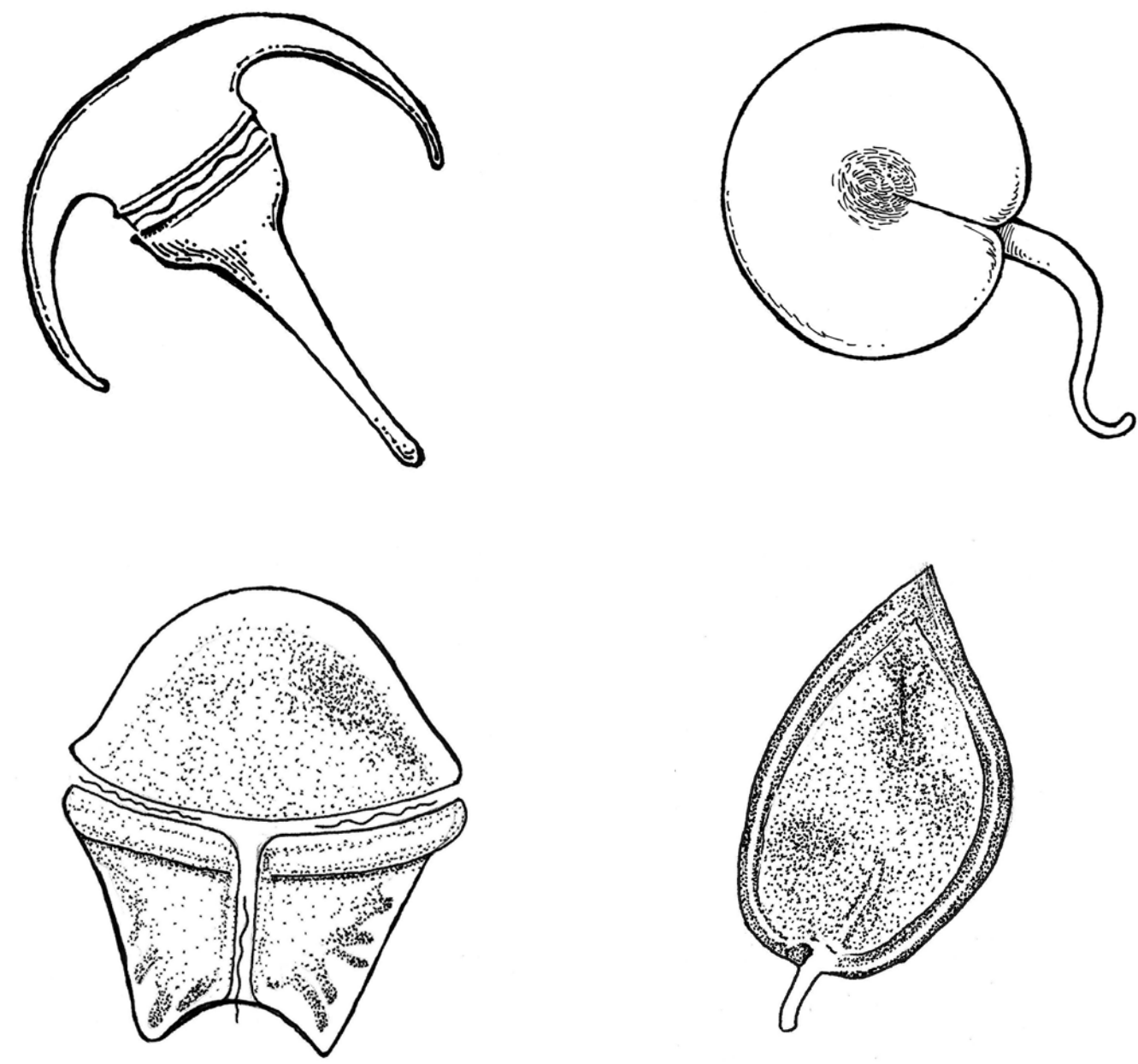
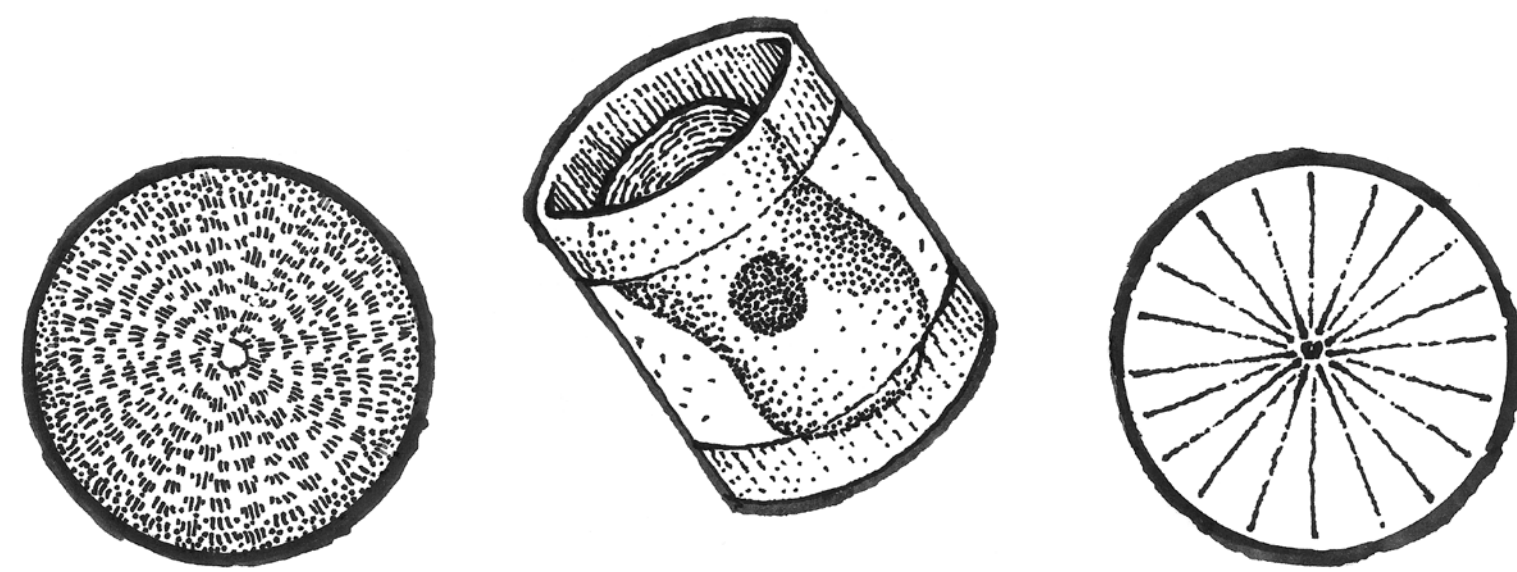


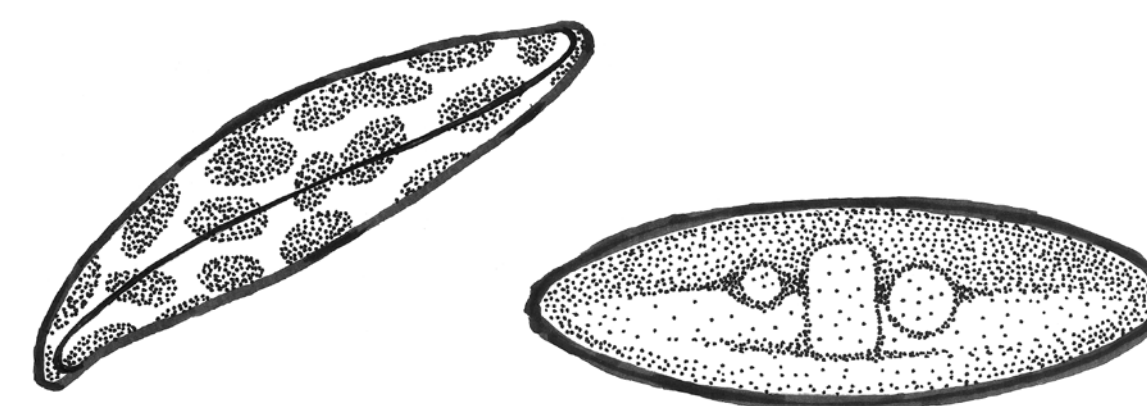
# PHYTOPLANKTON



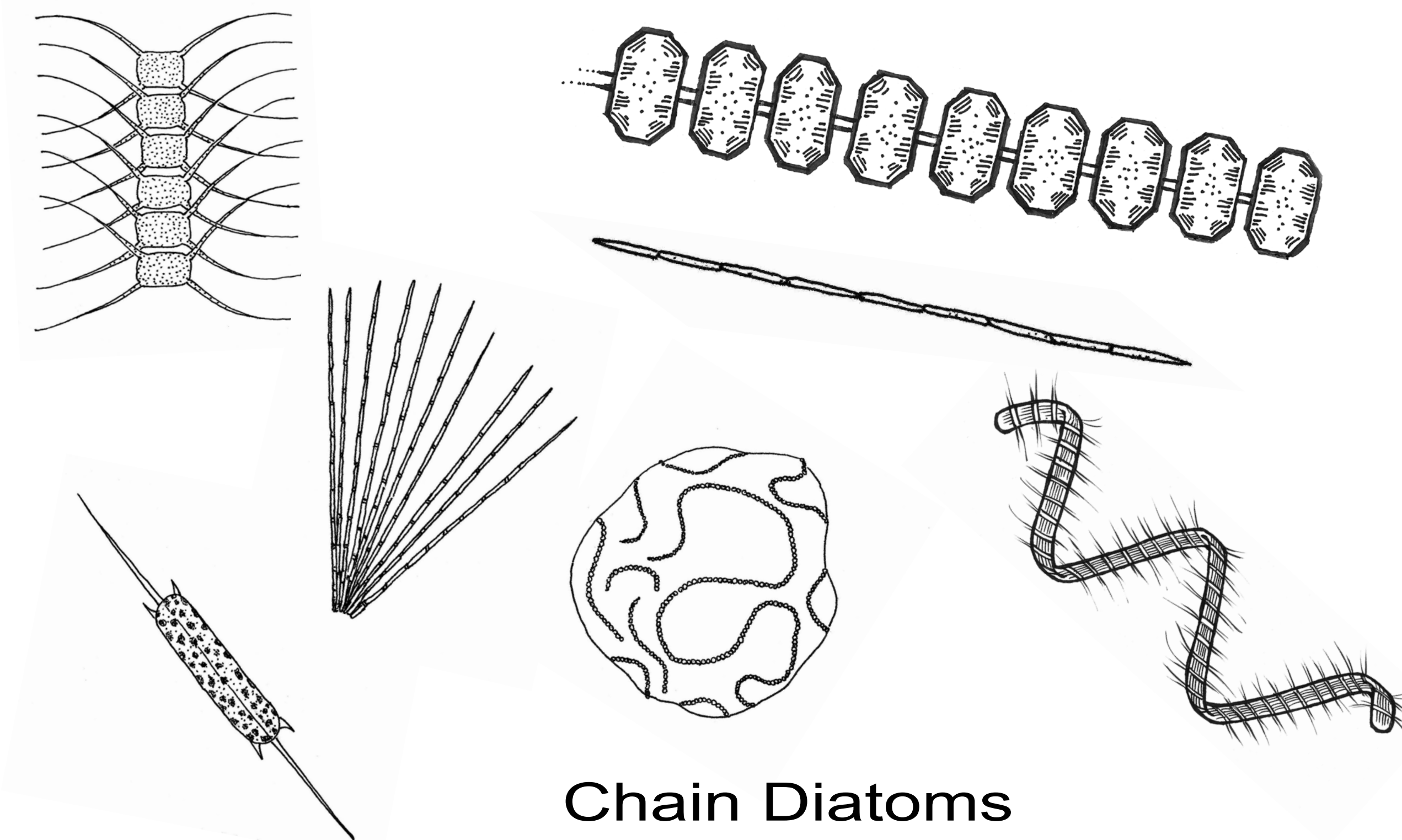
Dinoflagellates



Centric Diatoms

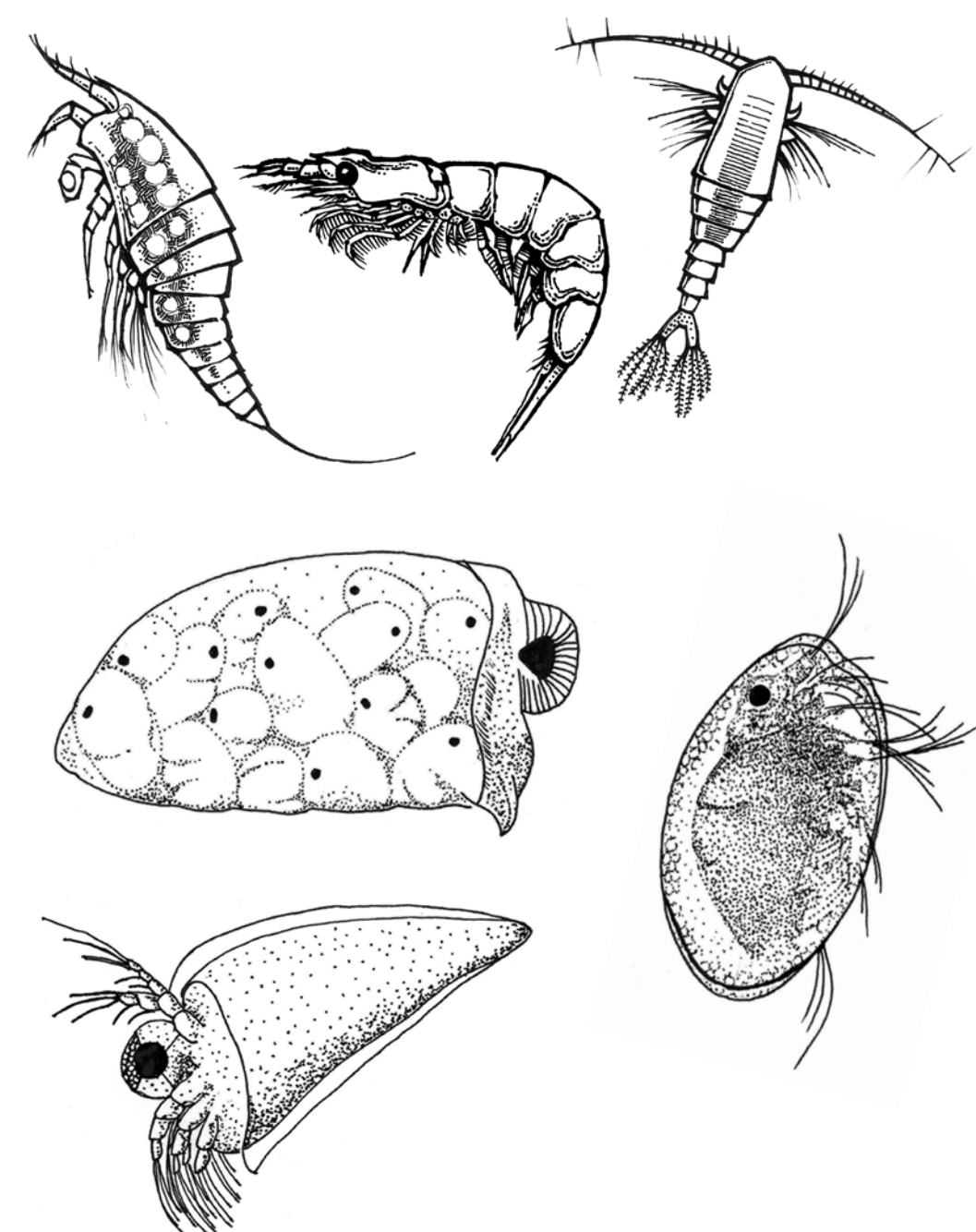


Pennate Diatoms

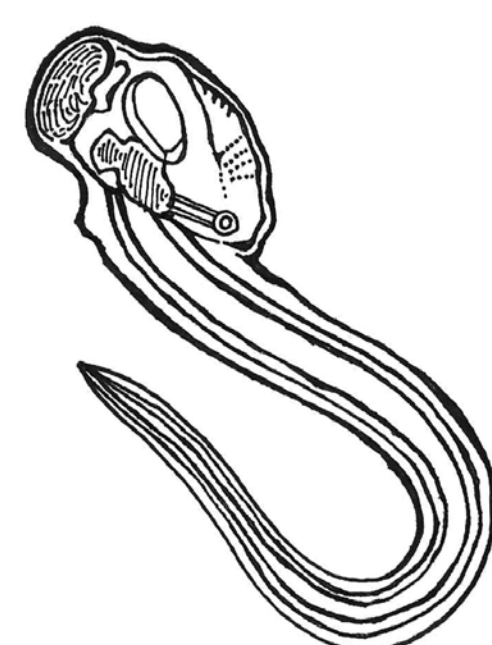


Chain Diatoms

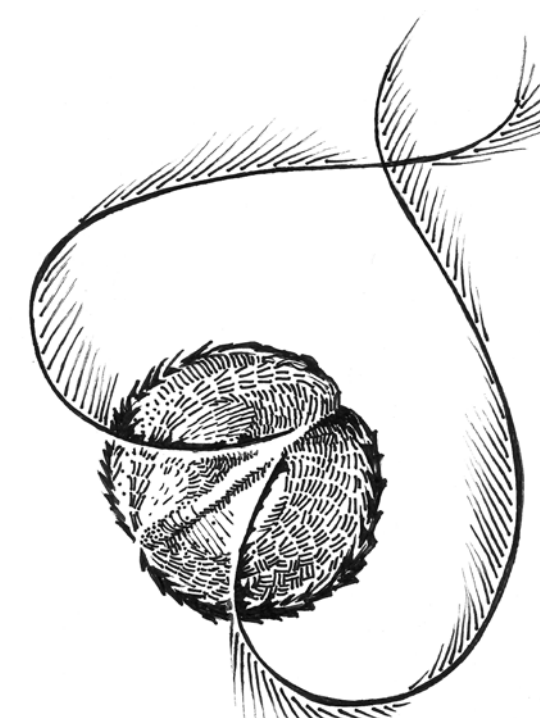
# ZOOPLANKTON



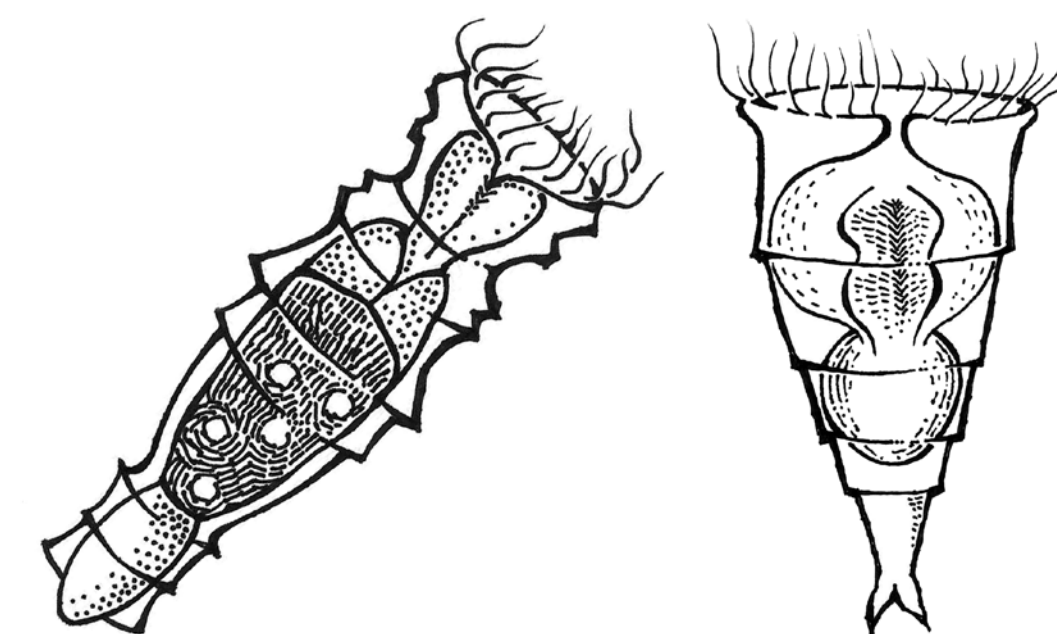
Crustaceans  
(copepods, krill, cladocera)



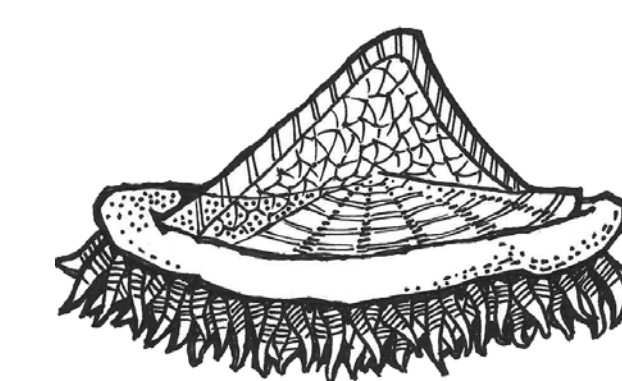
Chordates  
(larvaceans)



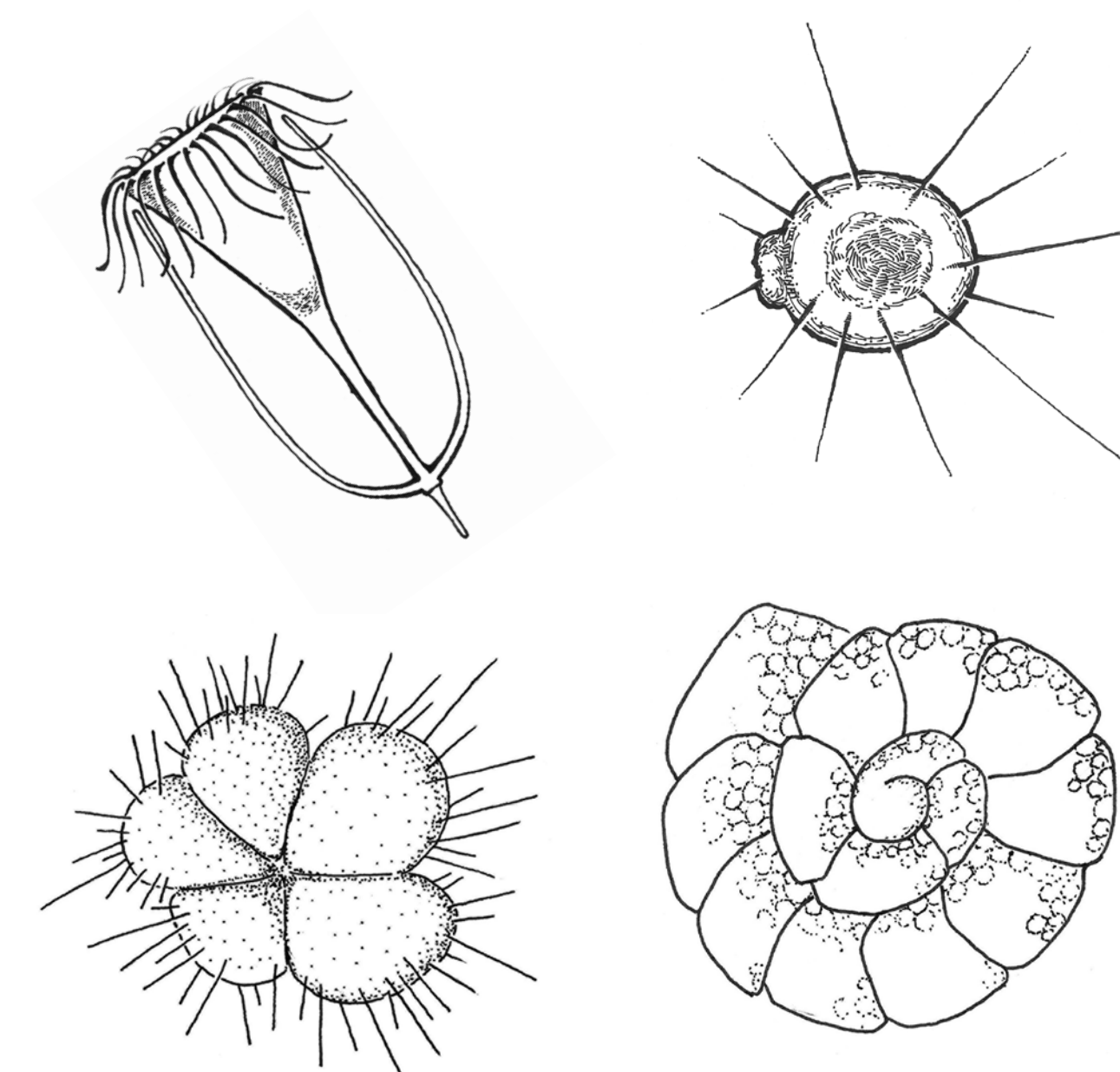
Ctenophores  
(comb jellies)



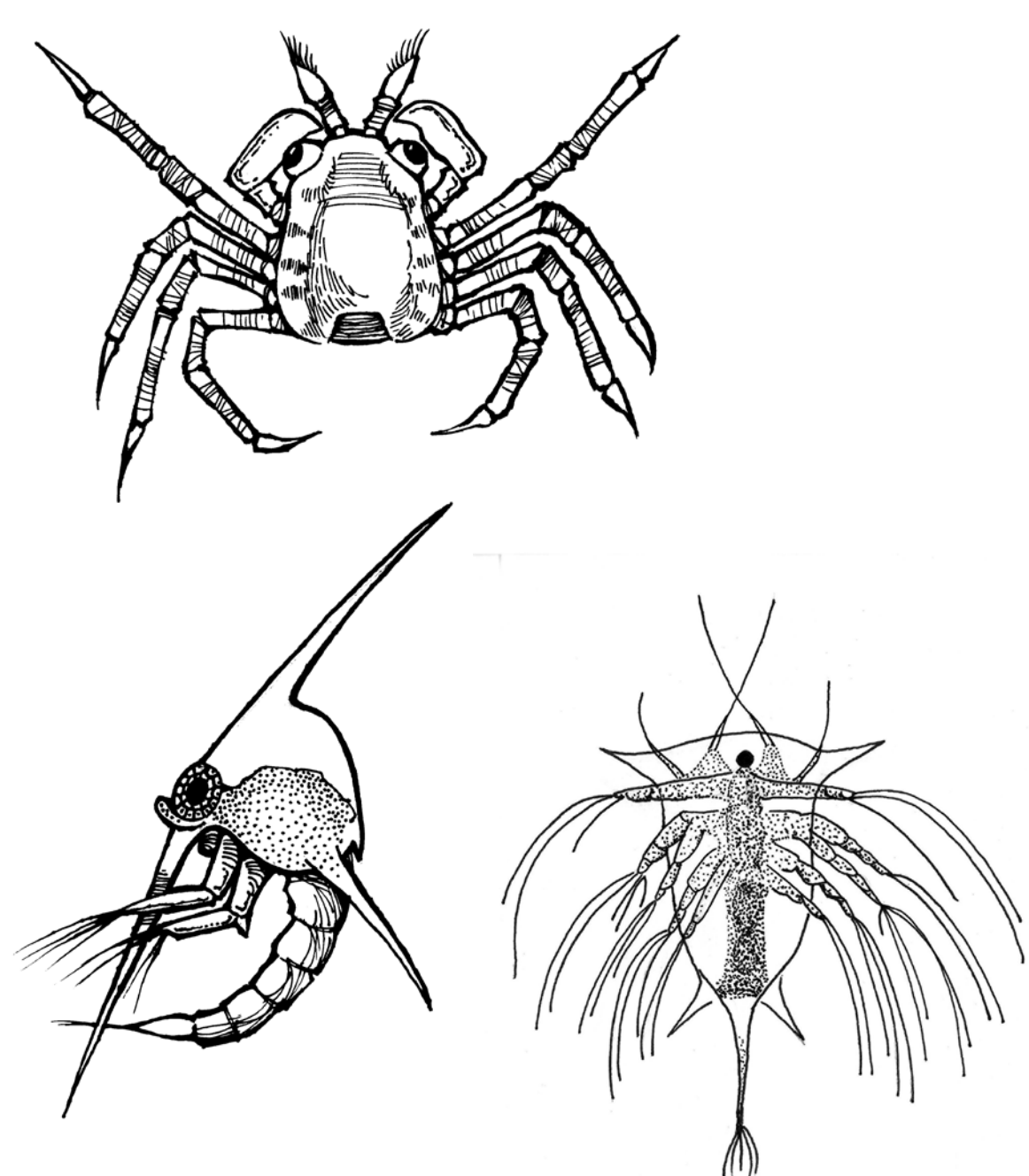
Rotifers



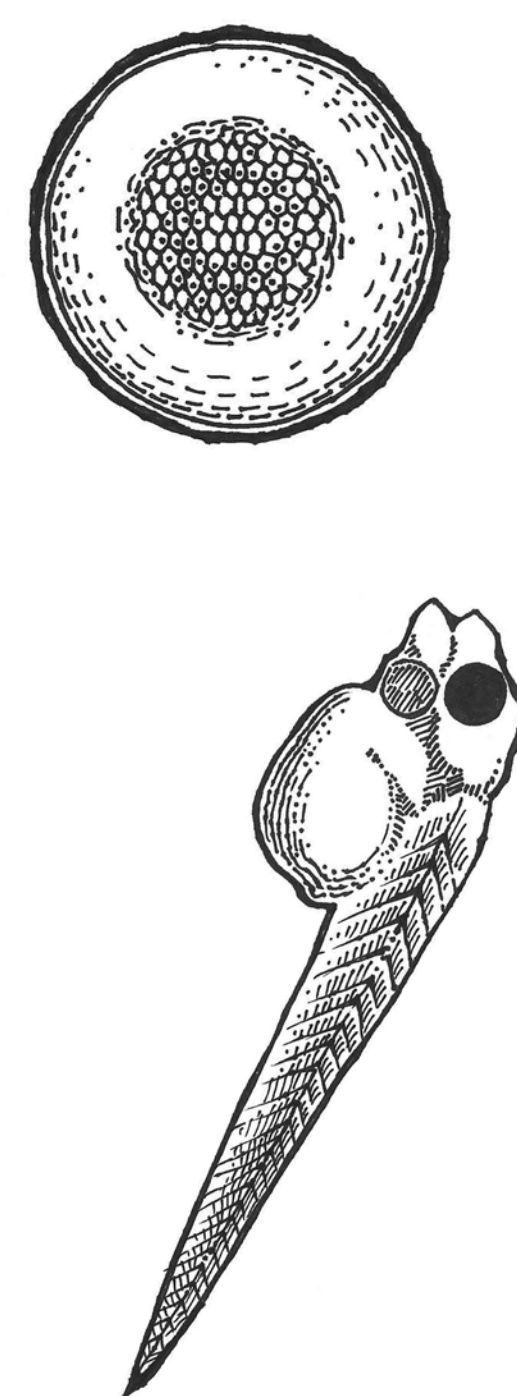
Cnidaria  
(jellies)



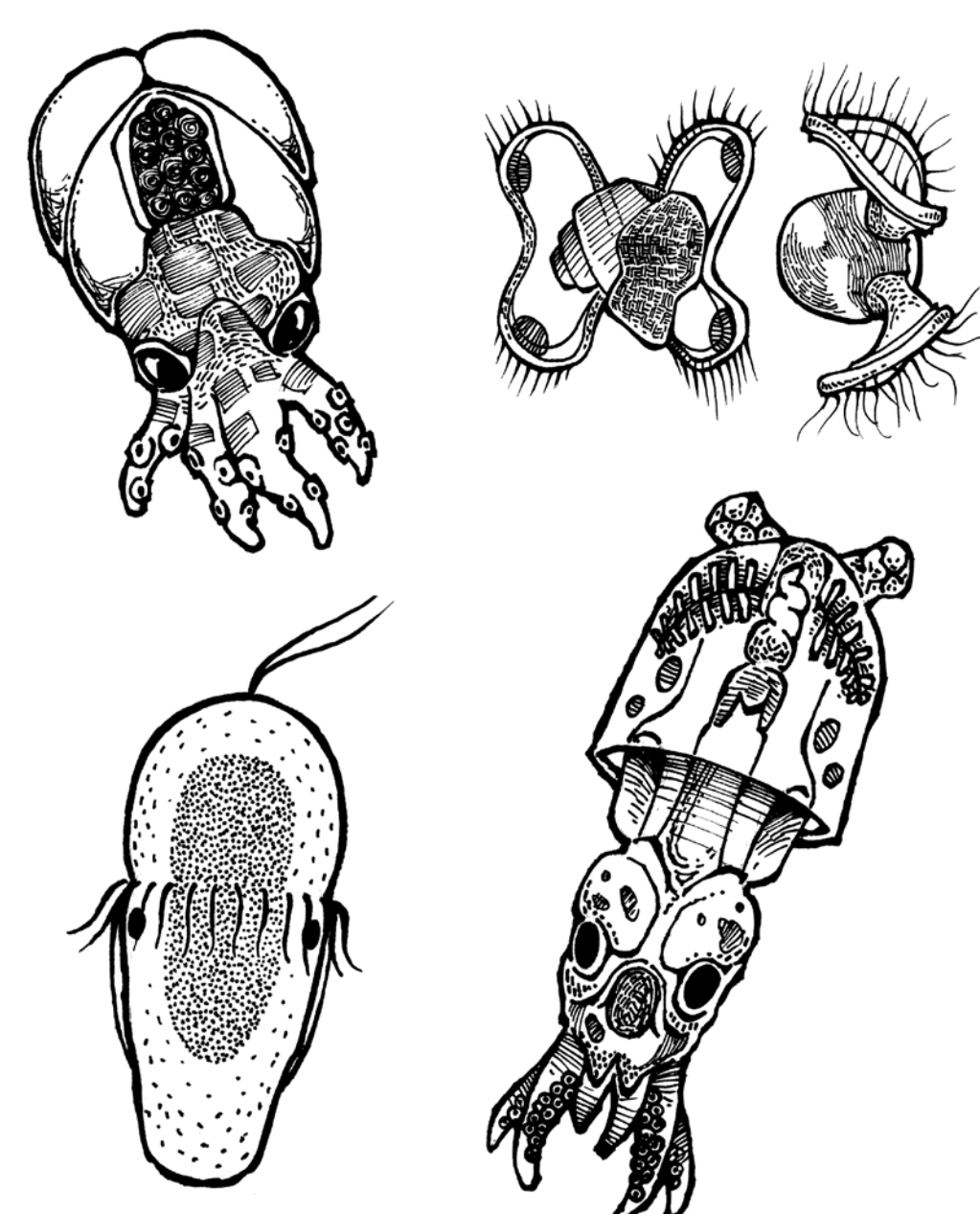
Protozoa  
(tintinids, radiolarians, forams)



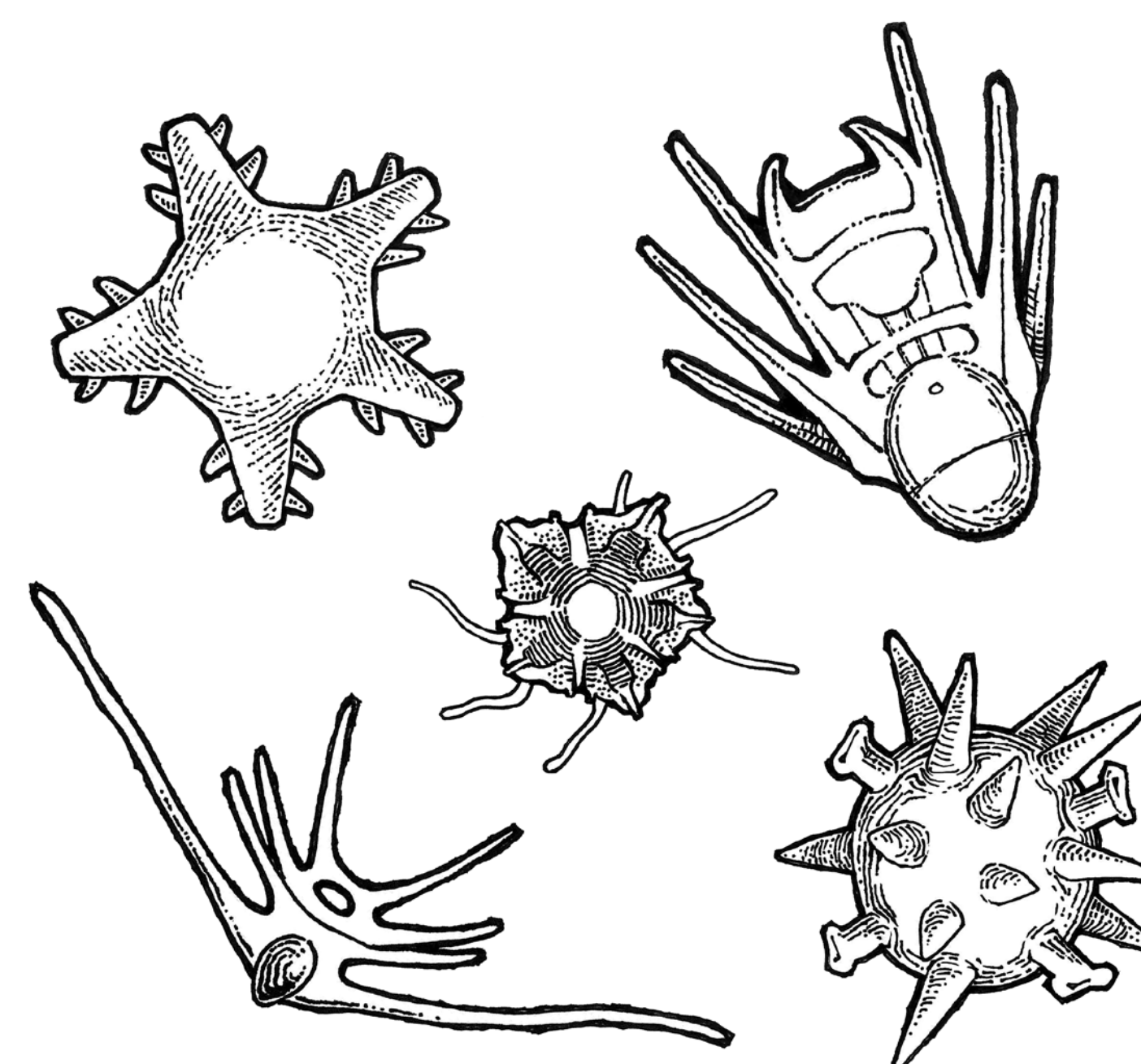
Crustaceans  
(crabs, shrimp, barnacles)



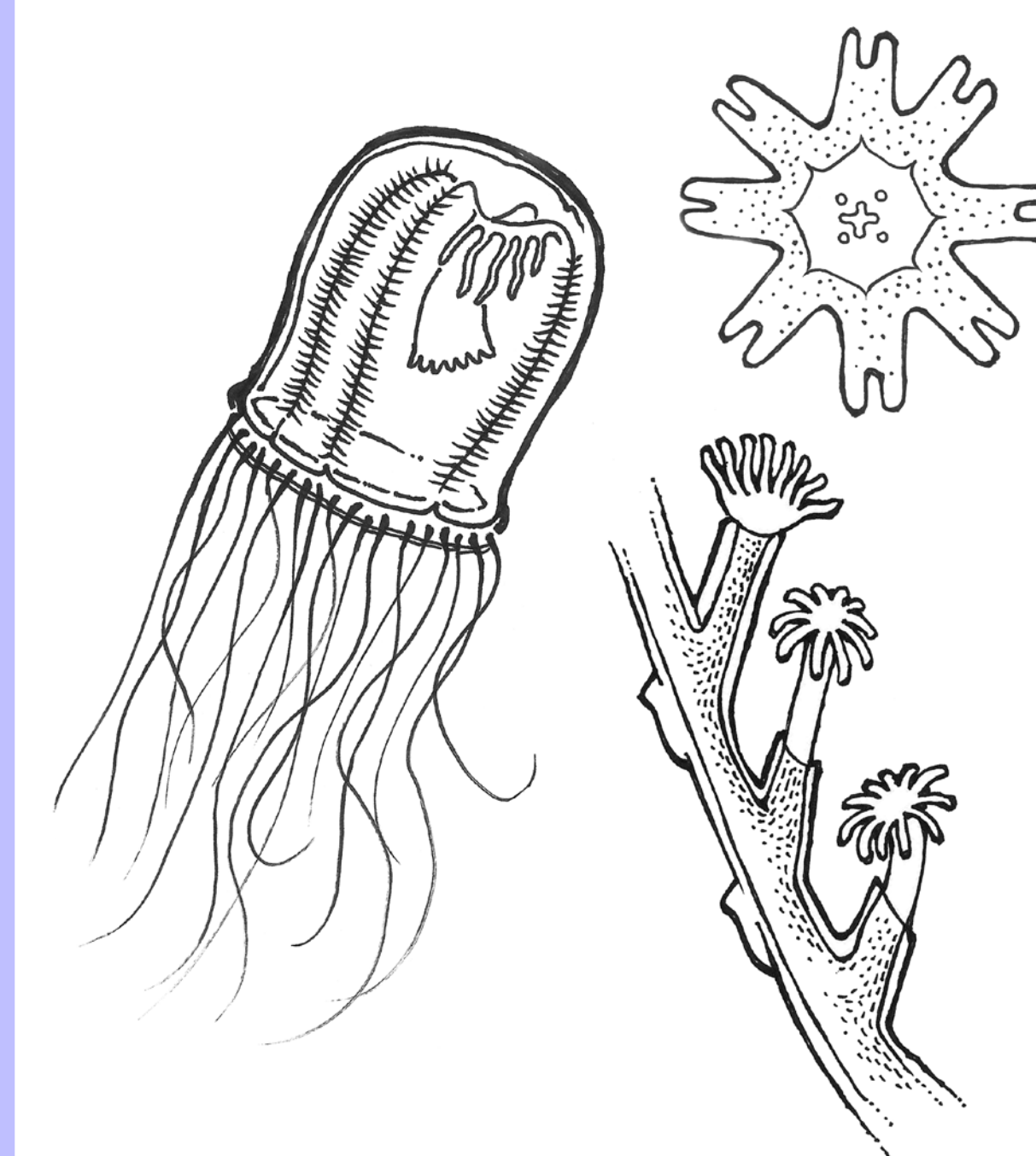
Chordates  
(fishes)



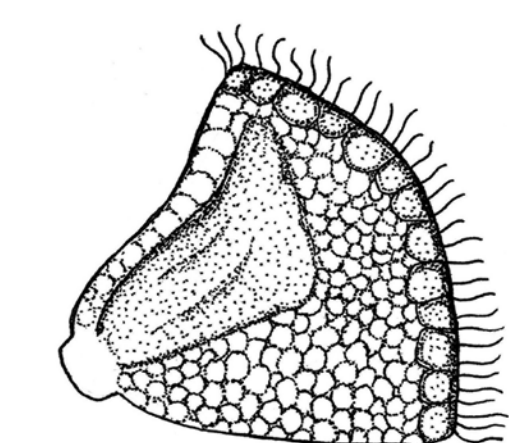
Molluscs  
(squid, octopuses, clams, mussels)



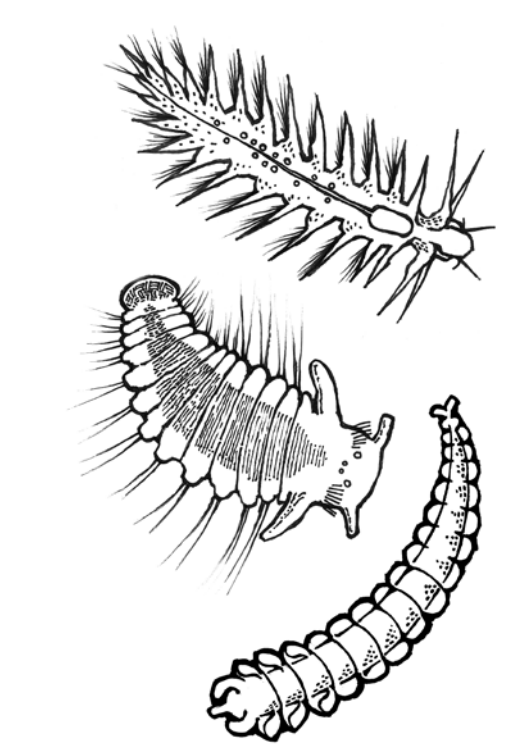
Echinoderms  
(sand dollars, sea stars, urchins)



Cnidaria  
(jellies)



Ectoprocta  
(bryozoa)



Annelids  
(bristle worms)

HOLOPLANKTON

MEROPLANKTON